

Farnham with Stratford St Andrew Community Emergency Plan

Version 5 Dated 8 January 2024

Under the Civil Contingencies Act 2004 an emergency is defined as “an event or situation which threatens serious damage to human welfare, the environment or the security of the United Kingdom”.

Introduction: Farnham with Stratford St Andrew are small parish with approximately 124 properties and 245 residents. The villages are 3 miles southwest of Saxmundham on the A12, 11 miles from Woodbridge to the south and 26 miles from Lowestoft to the north.

Activation and Response: In case of an emergency affecting the Parish, the following persons will form an **Emergency Coordination Group (ECG)**, when safe to do so and as far as is practical. The Group will assess the local impacts of the incident or natural disaster, consider the local response and the capabilities of the community to care for itself during the emergency, inform, and support both residents, particularly the vulnerable who may need help, and responding agencies. At all times when enacting this Plan, it must be borne in mind that the Emergency Services and Local Authorities hold statutory responsibilities to conduct their roles and functions. Anything done by local volunteers is in support of those Authorities and in no way supersedes them.

Emergency Coordination Group (ECG)

Please see note 1 on page 3.

Name	Parish Role	Response Role	Landline	Mobile	Email
Katherine Abbott	Parish Clerk	ECG	N/A	07436 434544	Parishclerk.f@btinternet.com iosonokatherine@gmail.com
Ian Norman	Chair	ECG	01728 602851	N/A	ian.norman456@btinternet.com
Rosemary Conibeer	Vice Chair	ECG		07748 288945	rosemaryconibeer@me.com
Richard Ayres	Councillor	ECG	01728 604547		richard@molletts.com
Jill Pass	Councillor	ECG			jill@littlestudfarm.co.uk
Tim Plant	Councillor	ECG	01728 604683		ttplant@btinternet.com
Richard Sayer	Councillor	ECG			sayer@suffolkskies15.co.uk
Annabel Warne	Councillor	ECG			annabel.warne@hotmail.co.uk
Jeremy Williams	Councillor	ECG			jeremyhwilliams@btinternet.com

Farnham with Stratford St Andrew Community Emergency Plan

Version 5 Dated 8 January 2024

In case of any local emergency, if there is **ANY threat to life dial 999** and alert the emergency services (Police, Fire, or Ambulance) at once. If there is no perceived threat to life, but you have **information** that may help the emergency services, **dial 101 (Police)**.

- If you're a British Sign Language (BSL) user, you can call 999 BSL to use a remote BSL interpreter.
- If you have a hearing or speech impairment, use our textphone service 18000 or text us on 999 if you've pre-registered with the emergency SMS service
- Silent 999 calls - If you're in danger but you can't talk on the phone, you should still call 999, then follow these instructions.

Activation of the Plan

On activation of this Plan, the Parish Clerk or Chairman on behalf of the Emergency Coordination Group (see above) will contact East Suffolk Council to inform it of the activation. The Group will continue to consult with the District Council for the duration of, and recovery period from, the emergency. Ensure that East Suffolk Council's call taker is informed that the call is from Farnham with Stratford St Andrew Parish Council and give your name and appropriate contact details.

IN OFFICE HOURS: Call Emergency Planning Officer (EPO) / District Emergency Planning Officer (DEPO) 07920 139306 / 07920 139293 (if no response, use the Out of Hours arrangement below)

OUT OF HOURS: Call East Suffolk Services Ltd (ESSL) 0800 440 2516 – and request that the ESSL Duty Officer notifies East Suffolk Council's Emergency Activation Officer **Emergency Control Centre (ECC) when activated:** Telephone 01502 523630 (both East Suffolk House – Melton and the Riverside Offices – Lowestoft use the same phone number). In a widespread incident, the EPO and the ECC are single points of contact and may be supporting the wider response across the County and therefore may not be able to respond to you at once.

Routine Contact - (EPO) 07920 139306 / (JEPU) 01473 265321, Peter Langford (DEPO) 07920 139293, Emergency.Planning@eastsoffolk.gov.uk

Insurance

The Community Emergency Coordination Group (CECG) and CECG volunteers will be covered by East Suffolk Council's insurance under the following circumstances ONLY:

- East Suffolk Council has requested you activate your plan and volunteer group.

Farnham with Stratford St Andrew Community Emergency Plan

Version 5 Dated 8 January 2024

- The CECG volunteers are registered with the CECG.
- The CECG and CECG volunteers are under the direction of a local authority member of staff (this can be remotely) and the local authority is given regular updates by the CECG of task progress / issues arising.
- The CECG and its volunteers only conduct the actions / activities that they have been authorised to do or as agreed by the local authority.
- A record of the activities undertaken, and volunteers employed in those tasks, is kept by the Emergency Coordination Group
- Activities the Group or its volunteers have been asked to undertake must be equal to their skills and competency.
- Appropriate dynamic risk assessments are conducted.
- The use of motor vehicles is not covered by the local authority's insurance, and it is the responsibility of the individual to ensure that they have adequate and proper cover.

If the Group or its volunteers undertake activities that are not authorised by East Suffolk Council, it must be decided whether the Parish Council's insurance policy will cover such activities before continuing. *Please see note 2 below.*

NOTES:

1. This Plan contains information that must be controlled and managed in accordance with the Data Protection Act 2018 <http://www.gov.uk/data-protection>
2. The author of this document assumes no liability or responsibility for the consequences to individuals or teams working to or under this plan.

PLEASE SEE SUPPORTING APPENDICES at page 4 of this Plan onwards.

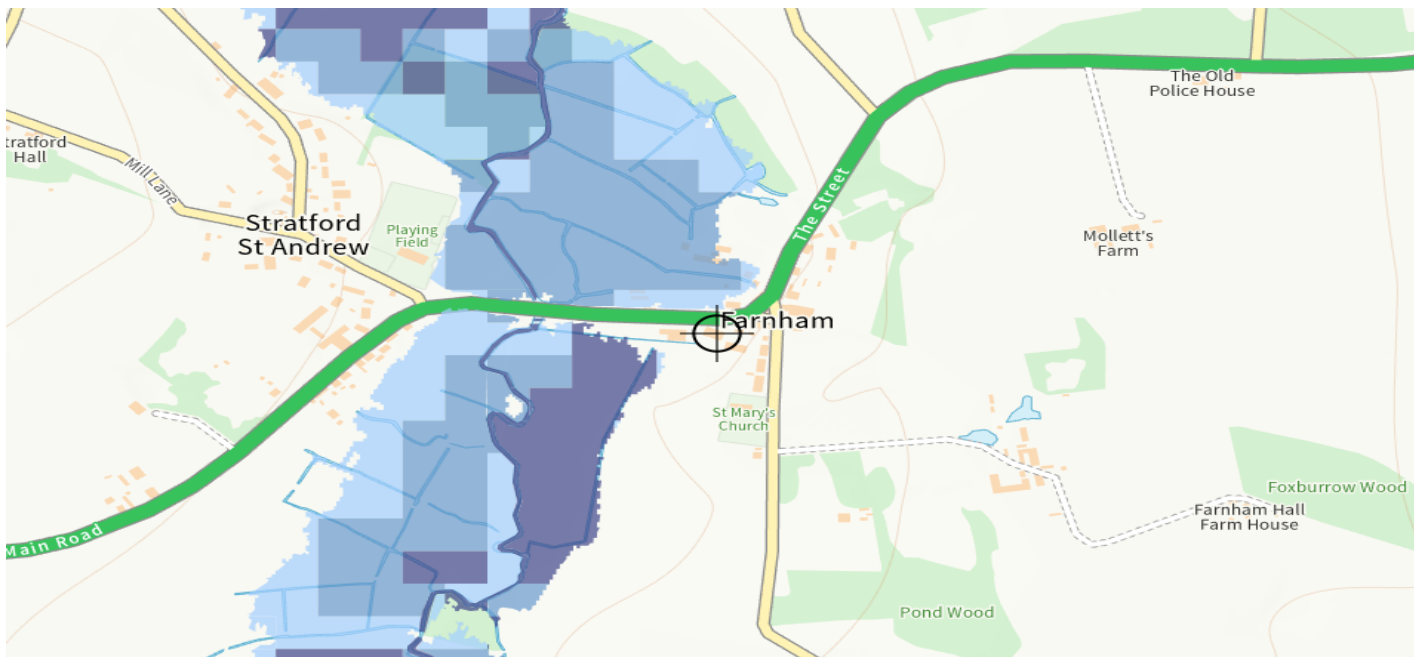
Farnham with Stratford St Andrew Community Emergency Plan

Version 5 Dated 8 January 2024

APPENDIX 1 – Summary of local risks and known vulnerable locations and communities, maps, warning schemes, general address and postcode data

It is almost impossible to develop a complete list of all risks and situations our community may face. However, it is reasonable to predict that the Parish will need to be prepared for generic risks such as flooding or extended periods of snow and ice. Separate guidance documents for specific risks have been prepared and are provided at Appendix 3. The purpose of this Plan and its appendices is to provide a framework which will be suitably flexible for use with all eventualities.

Flood risk Farnham: The risk of flooding from rivers and the sea is low – this means that this area has a chance of flooding of less than 0.1% each year – the risk from surface water (rainwater which cannot drain away) is similarly low. However, surface water flooding is difficult to predict as it depends on rainfall volume and location. See map below for predicted extent of flooding from rivers or the sea in Farnham. www.check-long-term-flood-risk.service.gov.uk

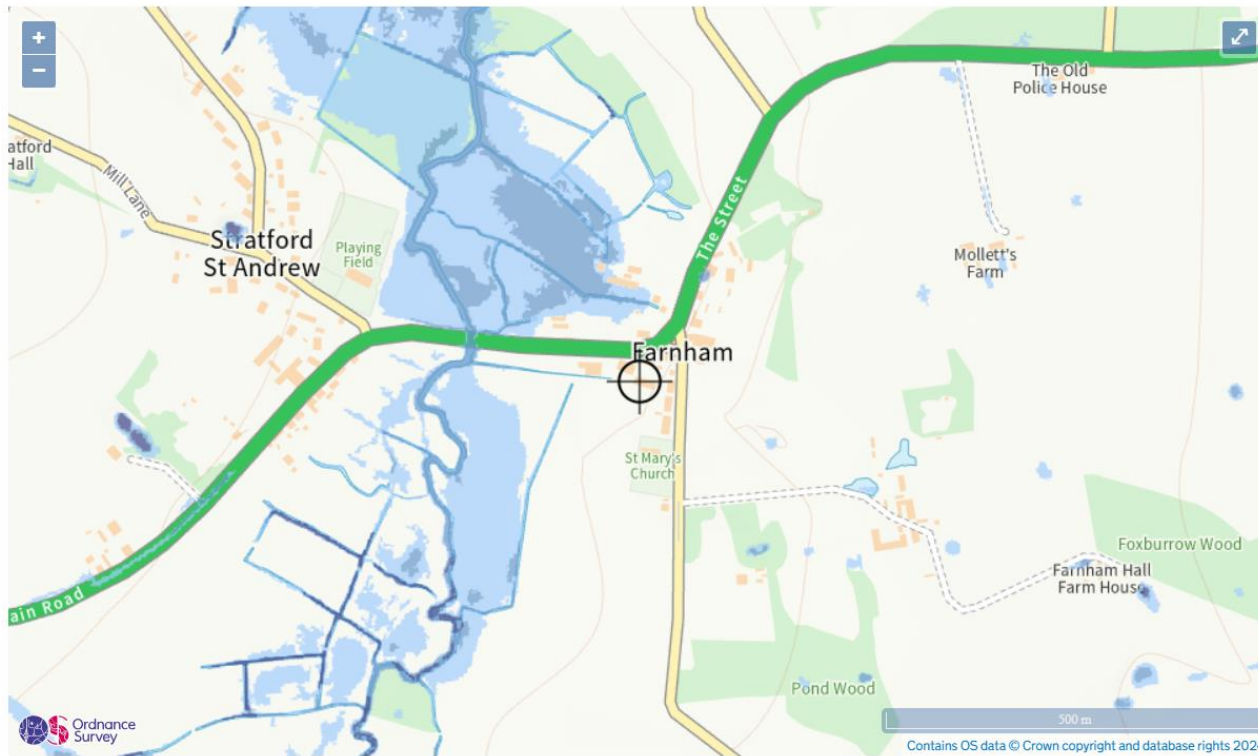


● High ● Medium ● Low ● Very low

Farnham with Stratford St Andrew Community Emergency Plan

Version 5 Dated 8 January 2024

Please see the map below for the predicted extent of surface water flooding in Farnham. [Learn more about this area's flood risk - Check your long term flood risk - GOV.UK \(check-long-term-flood-risk.service.gov.uk\)](https://www.gov.uk/check-long-term-flood-risk)



Extent of flooding from surface water

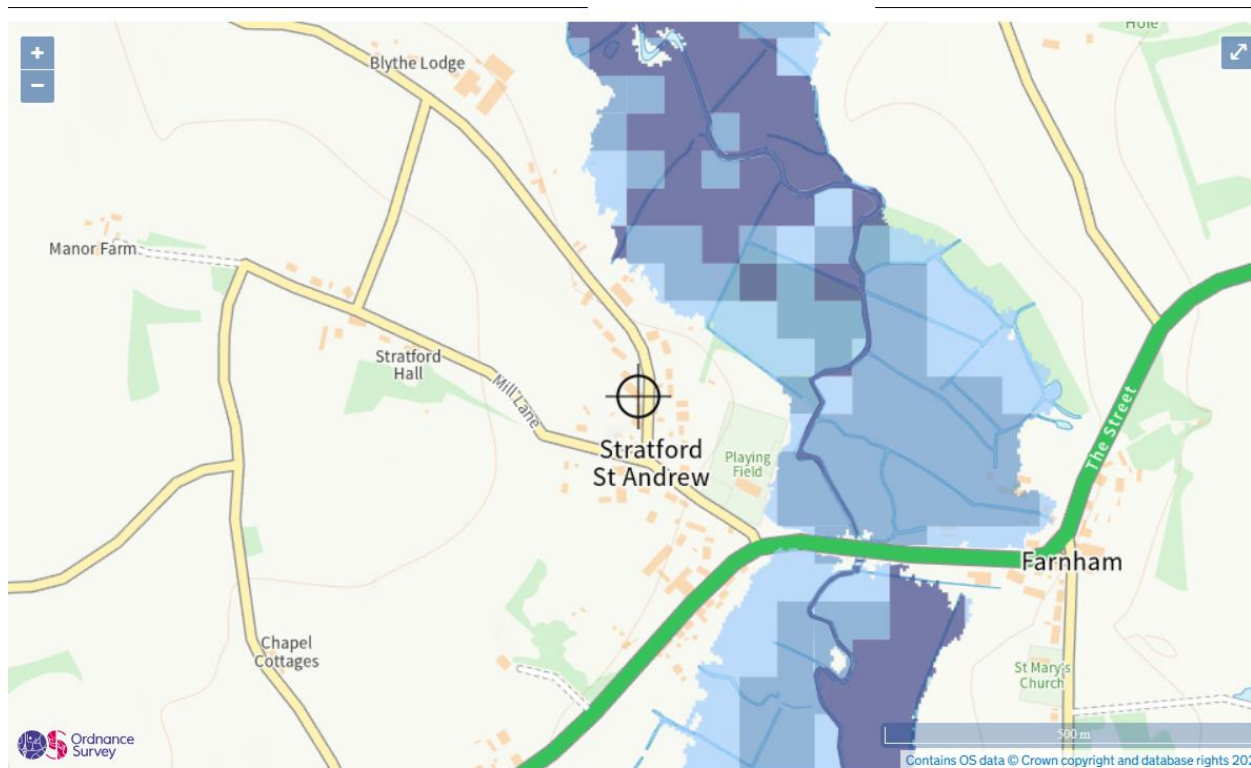
● High ● Medium ● Low ○ Very low ⊕ Location you selected

Farnham with Stratford St Andrew Community Emergency Plan

Version 5 Dated 8 January 2024

Flood risk Stratford St Andrew: As with Farnham, the risk of flooding from rivers, the sea or surface water is low at less than 0.1% each year. As stated above, it is difficult to predict the impact of surface water as it depends on rainfall volume and location.

Please see the map below for the predicted extent of flooding from rivers and the sea in Stratford St Andrew. [Learn more about this area's flood risk - Check your long term flood risk - GOV.UK \(check-long-term-flood-risk.service.gov.uk\)](#)



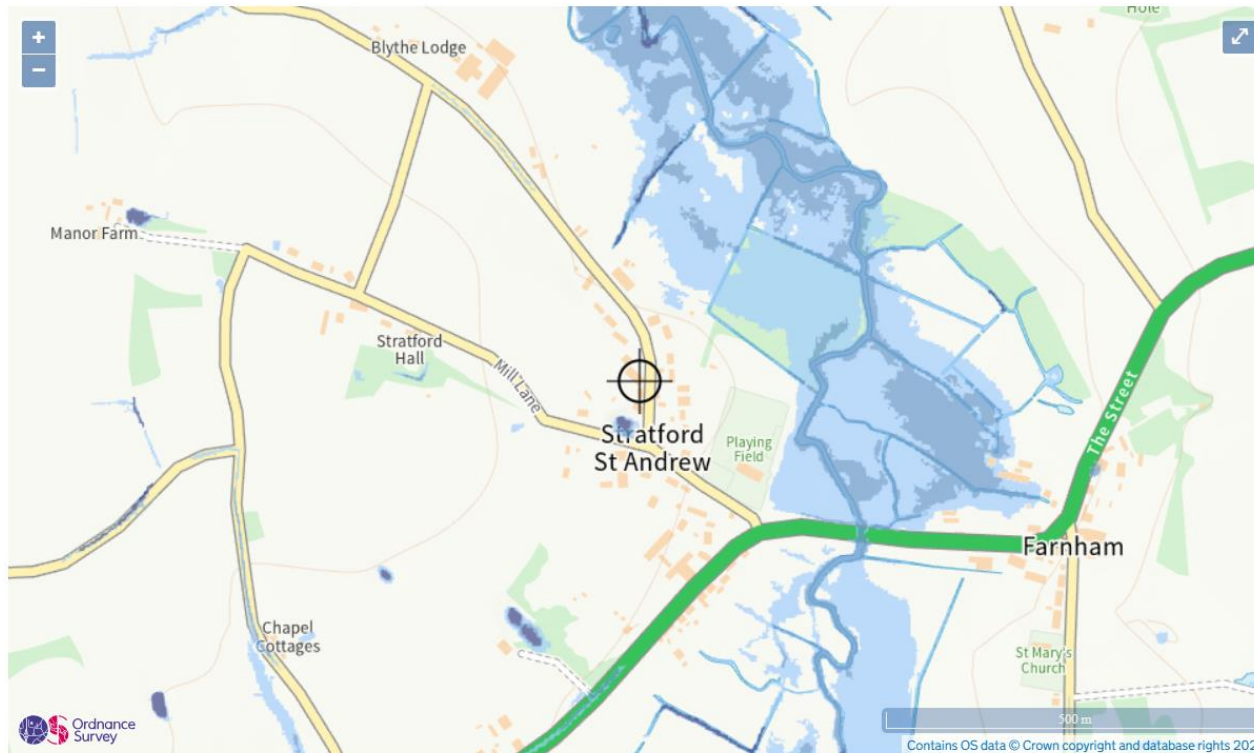
Extent of flooding from rivers or the sea

● High ● Medium ● Low ● Very low ⊕ Location you selected

Farnham with Stratford St Andrew Community Emergency Plan

Version 5 Dated 8 January 2024

Please see the map below for the predicted extent of flooding from surface water in Stratford St Andrew [Learn more about this area's flood risk - Check your long term flood risk - GOV.UK \(check-long-term-flood-risk.service.gov.uk\)](#)



Extent of flooding from surface water

● High ● Medium ● Low ○ Very low ⊕ Location you selected

The Parish Council subscribes to warning services for expected flooding, these are: www.check-for-flooding.service.gov.uk/alerts-and-warnings and www.metoffice.gov.uk/weather/warnings-and-advice/uk

Farnham with Stratford St Andrew Community Emergency Plan

Version 5 Dated 8 January 2024

Vulnerable people: The Government’s advice is that the following groups of people should be considered vulnerable during an emergency: young children, older people, mobility impaired, mental/cognitive function impaired, sensory impaired, homeless, pregnant women, non-English language speakers, tourists, and members of the travelling community. If it is possible to name the community’s vulnerable people in advance of an expected event, the Emergency Coordination Group will arrange for them to be checked on prior to and emergency. If it is not possible to collate such a list in advance, the Group will arrange for the residents to be checked on during and after an emergency.

People can choose to register their vulnerability with the Parish Clerk if they wish to, or, if they prefer, could make a “Community Friend” - someone that can be called during an emergency to provide mutual support – such as helping move furniture, look after pets, share house keys, maybe know which valuable and sentimental items should be moved upstairs, check you have heat and hot food etc.

General postcode and address

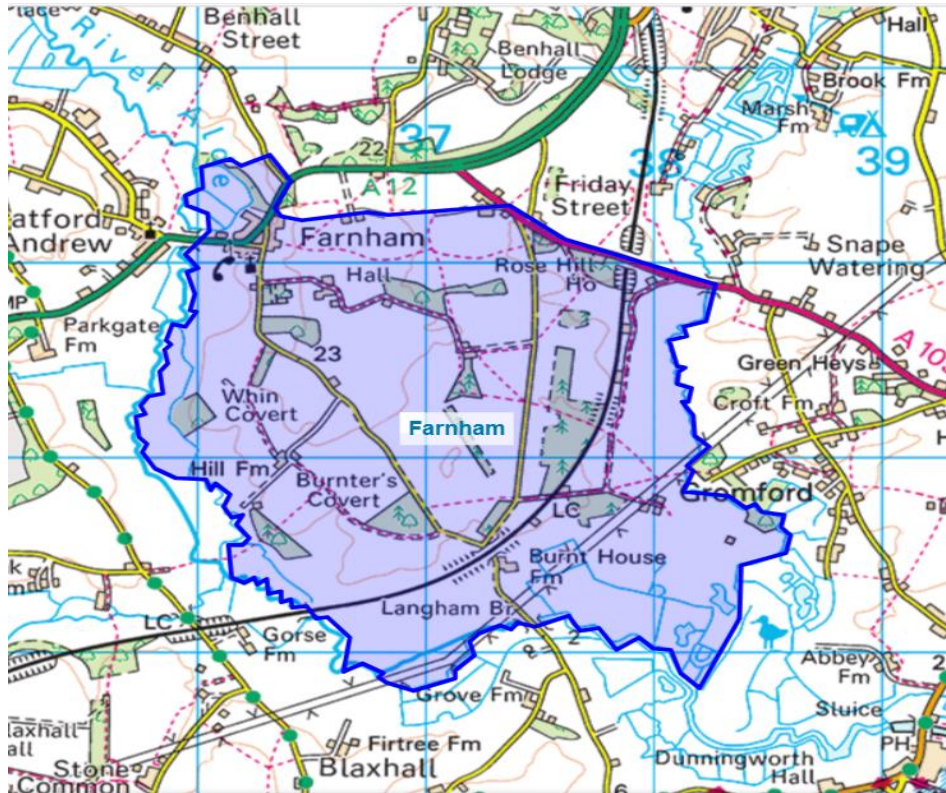
Postcode	Village	No of Households	Postcode	Village	No of Households	Postcode	Village	No of Households	Postcode	Village	No of Households
IP17 1LT	SSA	2	IP17 1QZ	Farnham	2	IP17 1LW	SSA	7	IP17 1LB	Farnham	8
IP17 1LQ	SSA	3	IP17 1LY	Farnham	2	IP17 1LH	SSA	1	IP17 1LU	Farnham	4
IP17 1LJ	SSA	3	IP17 1JU	Farnham	4	IP17 1LF	SSA	20	IP17 1LX	Farnham	1
IP17 1LL	SSA	18	IP17 1JX	Farnham	2	IP17 1LG	SSA	8	IP17 1JY	Farnham	1
IP17 1LN	SSA	4	IP17 1GZ	Farnham	3	IP17 1LJ	SSA	1	IP17 1JZ	Farnham	13
IP17 1LQ	SSA	2	IP17 1LA	Farnham	6	IP17 1PZ	SSA	5	IP17 1LE	Farnham	5
<u>Total</u>						<u>124</u>					

Farnham with Stratford St Andrew Community Emergency Plan

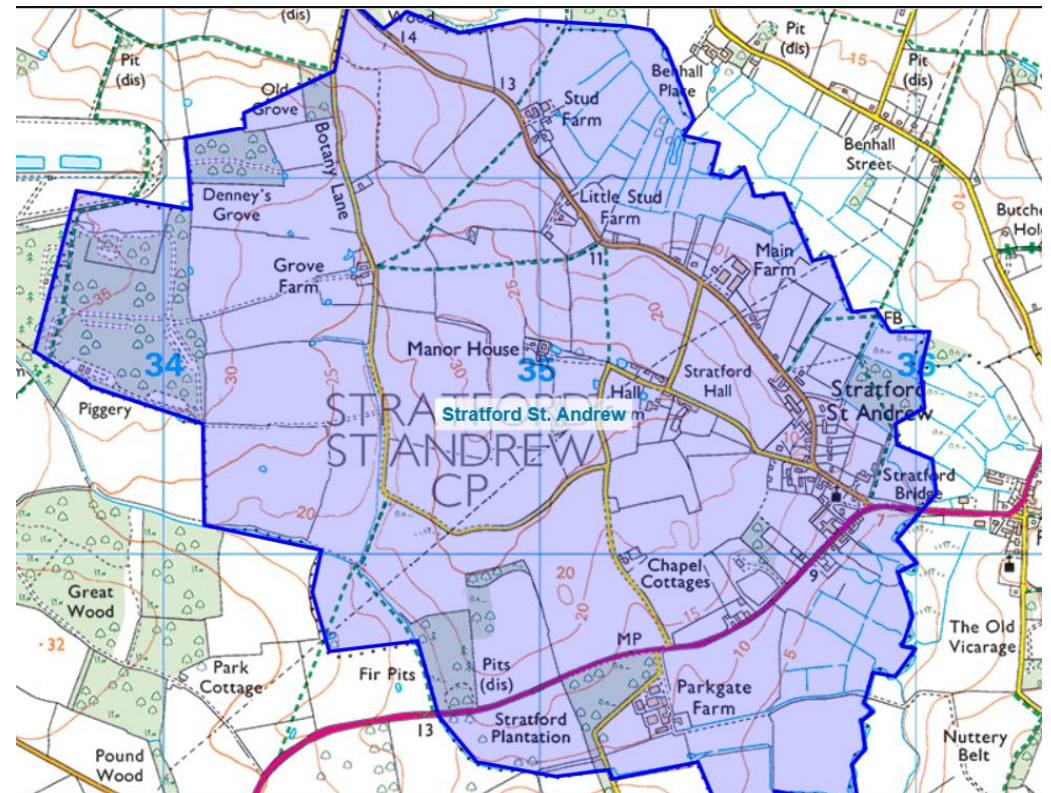
Version 5 Dated 8 January 2024

Parish Maps of Farnham and Stratford St Andrew are provided below:

Farnham



Stratford St Andrew



Farnham with Stratford St Andrew Community Emergency Plan

Version 5 Dated 8 January 2024

APPENDIX 2 – Community Building/Shelter/Hub Details.

Address - Great Glemham Road, Stratford St. Andrew, Saxmundham, Suffolk, IP17 1LJ

Contact Number - 01728 604476

Email - riverside_centre@outlook.com

Amenities

- Off-road parking for c75 cars
- Toilets
- De-Fib machine and first aid kit
- Kitchen
- Several large rooms

